

Welcome to Imaging Insight, the newsletter that aims to keep staff and stakeholders informed on the work of the Lancashire & South Cumbria (LSC) Diagnostic Imaging Network (DIN), and other related updates.

## Network Development & Maturity

The National Diagnostics team has confirmed that L&SC Diagnostic Imaging Network is a 'Developing' Network – 9 months ahead of the national target of December '23. A fantastic achievement thanks to all of the hard work by staff across the network.

Workstreams have been finalising their proposed 23/24 priorities for approval at May Diagnostics Programme Board.

## Data Workstream

Refresh of Capacity and Demand model taking place following a data refresh from trusts.

Further development of the DIN dashboard is underway including:

- Performance Improvement Plan Statistical process control charts
- Waiting list Minimum Dataset now included within Dashboard and tracked with providers.
- Local DM01 process now in place and allows early tracking of performance within PIP dashboard.

## Workforce Workstream

The business case for additional radiographers and radiologists, as per the approved 5-year recruitment plans, is progressing through individual trusts' governance/sign off processes.

Next steps after trust sign off; DIN sign off then ICB groups including LSC Provider Collaborative Board, LSC System Finance Group and LSC Integrated Care Board for final decision on investment.



## Digital Workstream

Project meetings have started to take place to move forward with RIS/PACS convergence across all 4 trusts from 2024.

Following some technical issues, the project to implement a single instance critical alert solution across L&SC is now moving forward again.

Additional home reporting workstations are being purchased with digital monies secured in 22/23.

## Clinical Reference Forum

The CRF have shortlisted their proposed priorities for 23/24. These will go for sign off by the Diagnostic Imaging Network Steering Group then Diagnostics Programme Board in May.

## Procurement Workstream

Work is continuing on key priorities including insourcing/outourcing and procurement of contrast media.

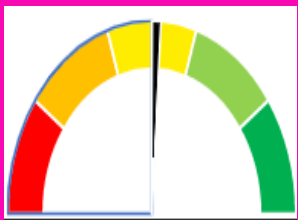
Options for the introduction of network wide contrast recycling arrangements are being explored.

The programme of works has been completed by LTH to secure funding in 23/24 for an additional CT bi-planer to enable expansion of the neuro IR service provided to L&SC patients. This will go to a National Diagnostics Panel for decision in May.



## L&SC DIAGNOSTIC IMAGING NETWORK

### Achievements and Successes 2022/2023



Nine months ahead of the National target of Dec '23 Network achieved 'Developing' maturity status

Additional funding sourced for our Network based on our reputation for delivering improvements

Growing clinical and operational confidence: openness to share learning and expert practice across Trusts

Trusts have thriving working relationships, increasingly supporting each other via 'Mutual Aid' across the Network

Game-changing "Imaging Workforce Business Case", seeking investment to support a robust 5-year Radiology Workforce Recruitment, Training & Development Plan

Advancing career development through endorsement of new Radiographer Career Development Framework

New funding secured for Post Graduate Training including Radiographer Reporting, Nuclear Medicine, and Ultrasound

Additional £250k secured for supporting state of the art training: Including new reporting room with ultrasound simulation and bespoke NW Imaging Academy facilities



Returned to pre-Covid levels, Diagnostic imaging waiting list timescales achieved for CT

Increased Network scanning activity by 7.5% since April 2022, supporting elective diagnostic recovery

£4.29 million secured for additional mobile scanners: 2xCT & 1xMR, adding flexibility to how and where we offer care to our patients

Expanded imaging capacity: 120,000 extra imaging tests provided through new Community Diagnostic Centres. Making scans available where and when patients want them

£882,000 saving: joint procurement of community scanning equipment led by the Network

£224,000 secured for home reporting workstations helping to support our workforce

Brand new Dashboard and Capacity and Demand Modelling Tool, providing analytical insight to inform decision making

£115,000 secured through L&SC Cancer Alliance for unified digital Critical Alerts

Improving patient care through converging RIS PACS across the Network



## 2022/23 – A Fantastic Year of Achievements!

When the L&SC Diagnostic Imaging Network was formally established in February 2022, all four Provider Trusts agreed on a shared vision: **to deliver a high quality, effective and accessible network of diagnostic imaging services throughout Lancashire & South Cumbria for patient and staff benefit.**

The above infographic highlights just some of the key achievements and successes from the first year of the Network's establishment. This is on top of the outstanding work that colleagues are delivering to provide high quality services and care for our patients, on a day-to-day basis, despite the many pressures and challenges.

What is outlined here has only been possible through collaboration; having shared aspirations and working closely with colleagues within all trusts across the Network along with wider teams and colleagues across the ICS. We would like to thank everyone who has provided their expertise, energy, and commitment to deliver a fantastic set of achievements in 2022-23. Our hope is to see even greater progress in the coming year.

We would be delighted if you would onward share as far and wide as you see fit. Feel free to print out and put on staff noticeboards – we really do want to share the successes and show our thanks and appreciation to all staff. Keep a look out for further updates in this monthly newsletter.

**Tony McDonald**

SRO L&SC Diagnostics Portfolio &  
Executive Director of Integrated Care,

**Jack Smith**

Director, LSC Diagnostics

### Meet the Diagnostic Imaging Network Team

**Name:** Dawn Neary

**Title:** Diagnostic Imaging Network Project Support

I'm the newest member of the team having joined the Diagnostic Imaging Network in December. It's been great getting involved and getting to know colleagues.

I've had a varied career so far having held managerial positions in mainstream retail, as well as in income generation for a local Hospice. I joined the NHS in January 2021 and worked on the COVID Mass Vaccination Programme which welcomed me quickly into the world of remote working and Teams calls!

My current role as the network Project Support aids the development and progression of the network as I work collaboratively with each network member, workstream and stakeholder. I'm normally found requesting information, chasing reports, or ensuring stakeholders are up to date with meeting notes and action logs, keeping our programmes ticking.

I really enjoy working in a collaborative team that makes a difference to patient outcomes. The DIN has had a positive impact so far and I'm looking forward to seeing future progress across LSC.

**Fun Fact:** I'm a real foodie and love walking my dog, a scruffy little rescue terrier with a big personality. When I'm not working or walking, I'm also a Girl Guide Leader and have been for over 30 years where I've organised large scale events involving over 10,000 young people!



[Lsc.diagnosticimagingnetwork@nhs.net](mailto:Lsc.diagnosticimagingnetwork@nhs.net)



SCAN ME



[Diagnostic Imaging Network](#)





## Diagnostic Imaging Network Team

On March 6th, members of the Network programme team joined Deborah Mitchell (Northwest Regional Diagnostics Lead) for visits to the radiology departments at Royal Lancaster Infirmary and Burnley General Hospital.

UHMB colleagues Debbie Crawford, Imaging Services Manager/Clinical Director Core Clinical Services, and Karen Brakewell, Head of Radiology at RLI/ Radiology Clinical Lead, hosted the visit at Lancaster and provided an informative tour of the department including sharing examples of improvements, achievements and good practice while talking to staff within the department.

ELHT colleagues Carol Wood, Interim Directorate Manager, and Lyndsay Couch, Interim Operations Manager, hosted the visit at Burnley, along with colleagues from the estates team. Another informative tour highlighted the hard work by the team to deliver the best possible service and care to patients and conversations with staff during the tour provided real operational insight.

Estates challenges and constraints were a theme across both sites but despite the challenges, the visits demonstrated the strength of the teams and their dedication and commitment to high quality service delivery. With the support of Regional colleagues, it's hoped that future funding sources may be identified to support estates improvements over the coming years.



A huge thank you to Debbie, Karen, Carol and Lyndsay and their teams for welcoming us and sparing valuable time to show us round. The sharing of insights and examples of good practice further reinforces the consistent focus across the Network on delivering a high quality, effective and accessible network of diagnostic imaging services for the patients of Lancashire & South Cumbria.

## Upcoming DIN Visits and Events

The Diagnostic Imaging Network (DIN) Programme Team are keen to have the opportunity to meet with colleagues across the network to share updates on the Network programme and listen to colleagues' feedback and suggestions on the work of the collaborative. The Programme Team usually join existing trust meetings but are always happy to arrange additional meetings if helpful.

The table below outlines the current planned dates the team is scheduled to attend. Please get in touch if you would like us to join any others via [Lsc.diagnosticimagingnetwork@nhs.net](mailto:Lsc.diagnosticimagingnetwork@nhs.net).

	ELHT RADIOLOGY DIRECTORATE	LTH RADIOLOGY BOARD	HEADS OF DEPARTMENT UHMB	BTH RADIOLOGY DIRECTORATE
	DATE	DATE	DATE	DATE
January	27-Jan	23-Jan		31-Jan
February	28-Feb	21-Feb		
March	30-Mar	22-Mar	17-Mar	
April	24-Apr	20-Apr		
May	30-May	19-May		25-May
June	29-Jun	19-Jun	15-Jun	
July	25-Jul	18-Jul		01-Aug
August	31-Aug			
September	29-Sep	20-Sep	14-Sep	
October	TBC	19-Oct		31-Oct
November	TBC	17-Nov		
December	TBC		15-Dec	



[Lsc.diagnosticimagingnetwork@nhs.net](mailto:Lsc.diagnosticimagingnetwork@nhs.net)



SCAN ME



[Diagnostic Imaging Network](https://www.lsc.nhs.uk/din)

