

Welcome to the first edition of Imaging Insight which aims to keep staff and stakeholders informed and up to date on the work of the Lancashire & South Cumbria (L&SC) Diagnostic Imaging Network and other related updates.

What is the L&SC Diagnostic Imaging Network, and how does this relate to the L&SC Diagnostics Programme?

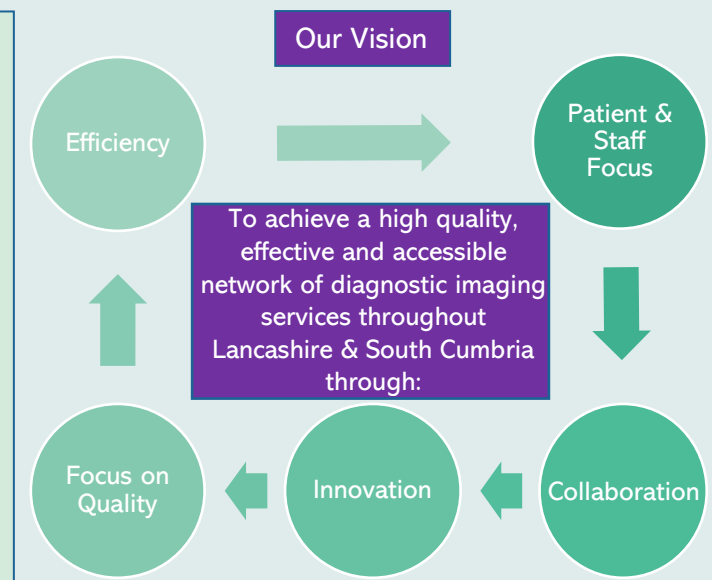
Over the past few years, a lot of work has been done within the L&SC Diagnostics Programme to agree a collaborative programme of work focused on radiology. All trusts in L&SC have been involved in this, sharing knowledge, skills and, more recently in response to Covid, assets to improve diagnostic imaging service quality, reduce variation for patients and start to improve sustainability in the long-term. This programme has covered a lot of areas, including workforce, data collection, digital integration, procurement and clinical pathways and updates have previously been shared via staff newsletters and a series of staff roadshows was held during late 2019/early 2020.

In November 2019, NHSEI published *Transforming imaging services in England: a national strategy for imaging networks* [Transformation Strategy](#). This strategy sets out a proposal for implementing collaborative imaging networks on a national basis across England to help to address challenges of rising demand, shortages in imaging workforce as well as ageing imaging equipment. This approach will deliver better quality care and better value services for patients and provide hardworking NHS staff opportunities to develop their career and increase their productivity. The strong foundation of collaboration developed over recent years within the L&SC Diagnostic Radiology Programme forms the basis on which to establish a L&SC Diagnostic Imaging Network.

What's happened so far in developing a L&SC Diagnostic Imaging Network?

In July 2021 the L&SC Provider Collaborative Board (Trust Chief Execs Group) agreed to the establishment of a L&SC Diagnostic Imaging Network. They agreed that the Network should be a **Collaborative** with all the trusts continuing to be responsible for providing their imaging services.

East Lancashire Hospitals NHS Trust has been designated as host trust for the Network; to host the national funding allocated to establish the Network and host the central Imaging Network team roles. Staff working within Diagnostic Imaging departments across the system remain employed by their current trust.



Workstreams have been re-established (Data, Workforce, Procurement, Digital) and a new Clinical Reference Forum has been set up. All workstreams, which involve imaging services colleagues from all trusts, are now:

- Finalising their key priorities for 2022/23.
- Including these within the Emerging Network Operational Plan which will focus on MR, CT, Non-Obstetric Ultrasound, General X-ray and Radionuclide scans.

A new Diagnostic Imaging Network Board has been established to oversee the delivery of the Operational Plan. A vision and set of values have been developed and agreed by the Network Board for all colleagues to feel proud of and put into action daily.



Meet the Diagnostic Imaging Network Team

Name: Jack Smith

Title: Network Director and Chairman of the Lancashire and South Cumbria Diagnostic Imaging Network Board

Jack was appointed on the 1st of April 2021 to lead the establishment of the Network and to govern the delivery of its 2022-2025 operational plan in consultation with key stakeholders. Jack is a practitioner psychologist with over 15 years healthcare management experience delivering quality improvements and reform for public and patient benefit both in England and overseas in Australia.

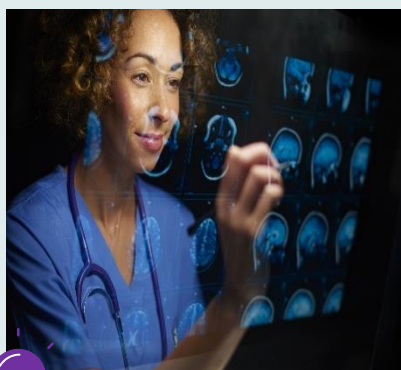
Jack said: 'The maturing collaboration across our four Provider Trusts, particularly in the response to COVID, has given us a strong foundation. We have been able to achieve some quick wins in advance of our formal launch in April 2022 including:

- financial investment for new imaging equipment, enhanced estates and workforce training;
- commenced the widening of our diagnostic imaging service offer into the community
- creation of a system-wide demand and capacity modelling tool with common data to inform future investment, mutual aid and workforce planning
- introduction of new technologies to support enhanced digital ways of working.

There is however much more to be undertaken to achieve our vision for a high quality, effective and accessible service provision for the 1.8 million population of Lancashire and South Cumbria. Implementing workforce recruitment, development and training initiatives to increase our staffing capacity across our hospitals and community settings is one of our most important challenges. I urge all stakeholders who stand to benefit from the delivery of our operational plan to get involved. I look forward to sharing information about our improvement activities and listening to your views.'

Fun Fact: Jack is a former professional cricketer representing Australia against England and New Zealand. He was the Performance Psychologist for the Lancashire County Cricket Club in their 2010 and 2011 championship seasons. Howzat!

Each edition of Imaging Insight will highlight a member of the Diagnostic Imaging Network Team.



Sharing This Briefing

This briefing is our way of starting to communicate and re-engage more widely with staff. It is for use within your own organisation and across your local system, for discussion and information. Please feel free to include it on meeting agendas, circulation lists and put it up on noticeboards as you see fit.

As well as regular updates we'll be arranging a series of events later in the year, at each of the acute trusts, to share progress in more detail, listen to your views and ideas and answer any questions.

Getting in Touch

We welcome your involvement, comments and ideas.

If you have any feedback or would like to share ideas or an issue or priority which you feel should be taken into consideration for any of the workstreams, please don't hesitate to get in touch

Lsc.diagnosticimagingnetwork@nhs.net

As well as providing the latest Diagnostic Imaging Network news, this newsletter is also for celebrating our successes across the network. If there is something you're proud of and would like to share, please let us know by email and we will include in a future edition.



Lsc.diagnosticimagingnetwork@nhs.net



SCAN ME



[Diagnostic Imaging Network](#)

