

Diagnosics Programme Programme Briefing and Key Messages

Issue 1: July 2019

Welcome to the first edition of the Healthier Lancashire and South Cumbria Diagnostics briefing which aims to keep stakeholders informed and up to date on the work of this programme and other related items of information.

Lancashire & South Cumbria Diagnostics Clinical Lead

An introduction from Dr Alistair Craig, Clinical Lead for the Lancashire & South Cumbria Diagnostics Programme.



Hello, some of you may know me already, but for those who don't here's a short introduction. I'm a consultant radiologist based at Lancashire Teaching Hospitals NHS Trust. My clinical practice includes vascular and non-vascular intervention as well as reporting some diagnostic work, such as CT post-mortem. I was appointed as clinical lead for diagnostics for the ICS, specifically with a remit to look at how the radiology departments could collaborate together to make things better for patients and staff.

We have undertaken a lot of work in the last 18 months agreeing a future programme with all trusts in Lancashire & South Cumbria. This covers a lot of areas, including workforce, data collection, digital integration, procurement and clinical pathways.

We know that many staff are unaware of the programme and how it might benefit or impact on them but wanted to ensure that we had agreement from all trusts around the broad structures of the work programme, prior to engaging front-line staff. It's important to stress that whilst the structure for the programme has been agreed – no decisions have been made about how care might be delivered in the future. We need your help for that.

This briefing is our way of starting to communicate and engage more widely with staff. We'll publish regular updates and in addition we're arranging a series of events later in the year, at each of the acute trusts, to share in more detail the progress on the Diagnostics Programme and answer any questions.

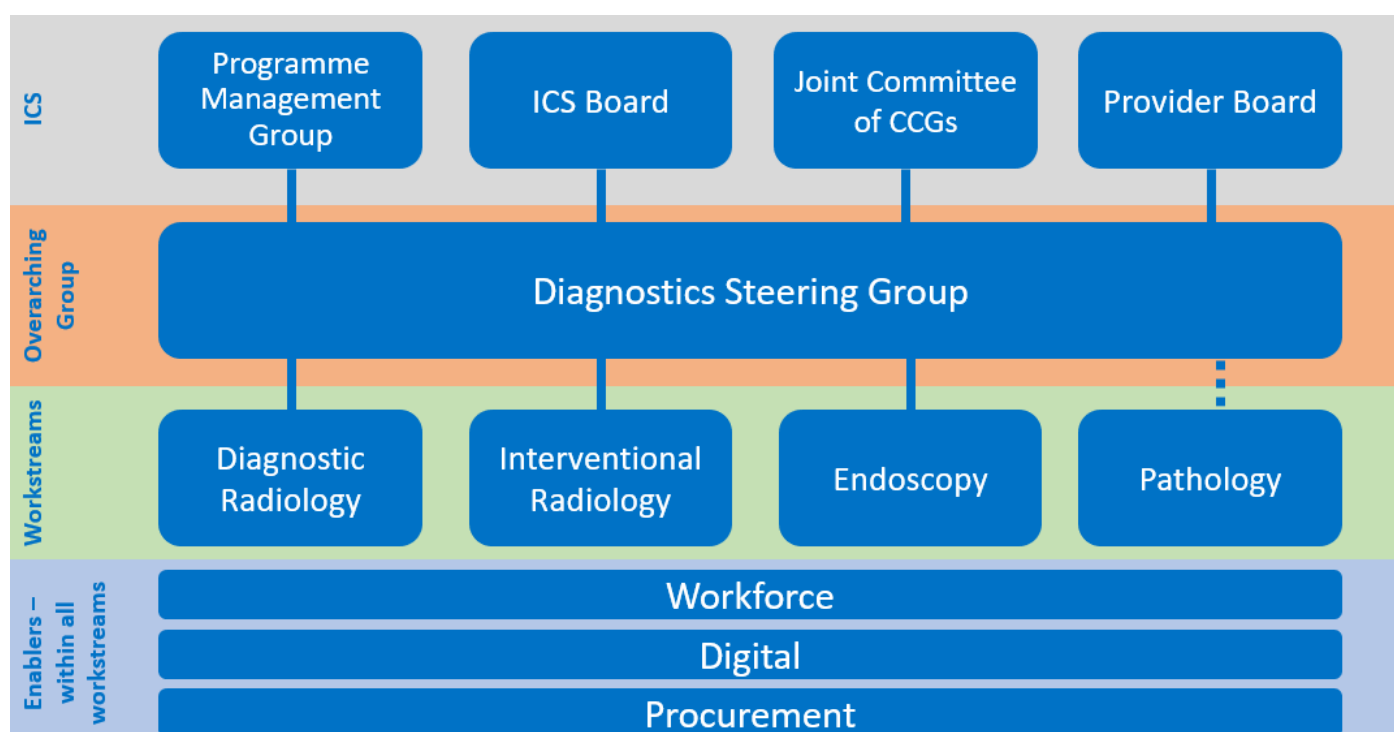
In the meantime feel free to contact me Alistair.Craig@lthtr.nhs.uk or my Diagnostics Programme team colleagues with any questions. Our programme email address is at the bottom of this briefing.

Programme Vision and Priorities for 2019/20

In January and February 2019 a number of workshops took place to define the vision for the future for Lancashire & South Cumbria Diagnostics Services. This was agreed by the Diagnostics Steering Group (DSG) in March 2019 as follows:

“To provide robust and sustainable integrated diagnostics services for the people of Lancashire and South Cumbria, improving quality and efficiency whilst reducing unwarranted variation.”

In addition, the workshops informed the development of programme priorities for 2019/20 and the programme structure to deliver these. These were also agreed by the DSG in March 2019.



Diagnostic Radiology

The Diagnostic Radiology group consists of Radiology Clinical Directors, Clinical Leads and Business Managers from the four acute trust providers in Lancashire & South Cumbria (L&SC) supported by the L&SC Clinical Lead and Diagnostics programme team. The key priority areas for 2019/20, which include key priority Cancer Alliance programme areas where these directly link/overlap, are as follows and workstreams are in place to progress these.

Data – focussing on standardisation of language (on systems), standardisation of coding, capacity and demand

Digital Integration – focussing on image storage, image sharing, cross platform working, AI solutions and access for remote working via integrated systems across the ICS

Standardised Pathways & Collaboration – focussing on the standardised implementation of national guidelines for investigation of choice and prioritisation of nationally recommended timed pathways for urgent conditions e.g. cancer, stroke, cauda equina

Workforce – focussing on building a picture of the full radiography/radiology workforce and options for different ways of working/training/new roles to address capacity pressures

Procurement – developing a procurement strategy which supports the immediate needs of Trusts as well as identifying opportunities for collaborative procurement of radiology equipment which enables integrated diagnostics services in the future.

Interventional Radiology

The Interventional Radiology group consists of Lead Interventional Radiologists and Business Managers from the four acute trust providers in Lancashire & South Cumbria (L&SC) supported by the L&SC Clinical Lead and Diagnostics programme team.

The L&SC DSG identified the need to develop agreed network wide pathways for site specialties that require emergency IR intervention. The first set of pathways have been developed for Out of Hours emergencies in the following specialties:

- Obstetrics (postpartum haemorrhage)
- Trauma,
- Urology (obstructive renal sepsis)
- Vascular

These pathways were drafted by the IR Group and then consultation was undertaken with the site specialty leads in each of the 4 trusts. The pathways were agreed by Trust MDs in July 2018 and have now been fully implemented.

Further work is now being undertaken to agree pathways for In Hours emergency IR intervention.

Endoscopy

The L&SC DSG identified the need to undertake a review of endoscopy services across L&SC. The completed endoscopy review (March 2018 and presented to both the L&SC DSG and the L&SC Cancer Alliance) provided an overview of current facilities, workforce, activity, bowel screening activity and overall target compliance. The review also highlighted future trends which will result in more required activity in all endoscopy units.

Key risks were identified as endoscopy workforce, lack of physical capacity, increased demand (both service and screening) and fragile screening programmes.

Each trust now has an endoscopy action plan in place and the diagnostics programme team are supporting all trusts in the implementation of action plans and monitoring of



improvement. Work is also being undertaken to support and develop the nurse endoscopy workforce, understand in more detail the challenges in the national bowel screening programme and improve the regional provision of EUS.

Pathology

The Pathology Collaborative was established prior to the establishment of the ICS Diagnostics Programme and as such has its own programme structure and governance arrangements. Briefings and communications for Pathology are sent out directly by the programme.

Drainages & Biopsies

We are carrying out a piece of work to look at what drainage and biopsy procedures are provided within Lancashire and South Cumbria, and by whom. This will allow us to identify skill shortages and will hopefully allow us to develop a coordinated recruitment strategy as we are aware that many staff are undertaking highly skilled procedures and providing an exceptional standard of care to patients but there are also procedures which are vital to managing patient care which can be inconsistently delivered because of staffing shortages.

If you undertake drainages or biopsies within your trust and haven't already done so, please could you take 10 minutes to complete our drainages & biopsies survey, link below.

[Click here to access survey](#)

Working as Part of Lancashire & South Cumbria Integrated Care System (ICS)

A letter has been sent by each of the Provider Trust Chief Executives to staff to explain the importance of the Lancashire & South Cumbria work and to show their commitment to supporting staff to be involved in the work. The letter is attached here.



Letter from CEOs re
ICS Acute and Special



Would you like to be involved?

If you are interested to learn more or would like to be involved in any of the work described above please do get in touch – we would love to hear from you! Our contact email address is below.

Question and Queries

This briefing is for use within your own organisation and across your local system, for discussion and information. Please feel free to include it on meeting agendas and circulation lists as you see fit.

If you have any questions or queries, please contact lsc.diagnosticsprogramme@nhs.net and we will endeavour to respond as soon as possible.